

# Exporting Images

---

Image Pilot Software

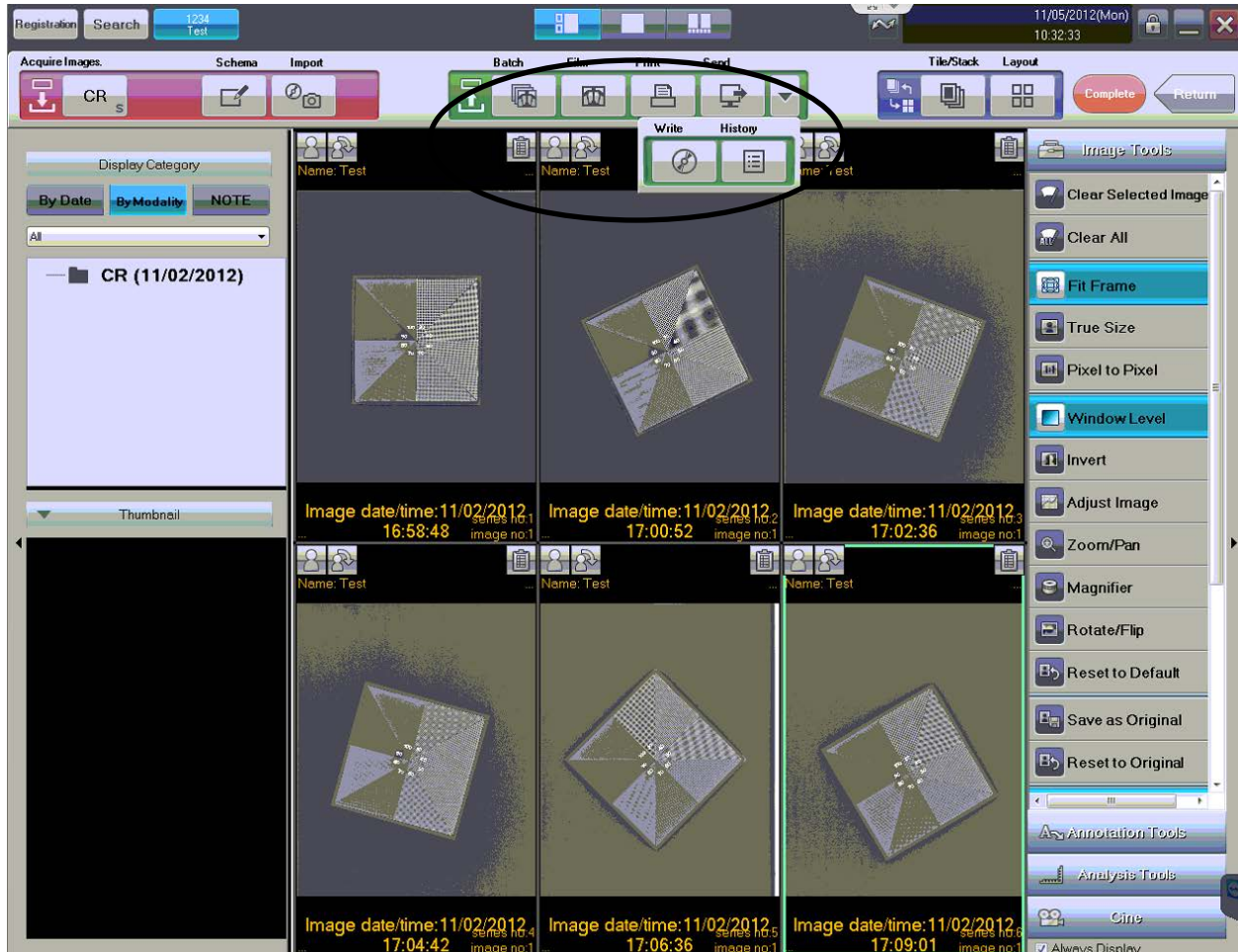


This document is intended for scil animal care company employees and clients. This document is for training purposes only.

# Exporting Images

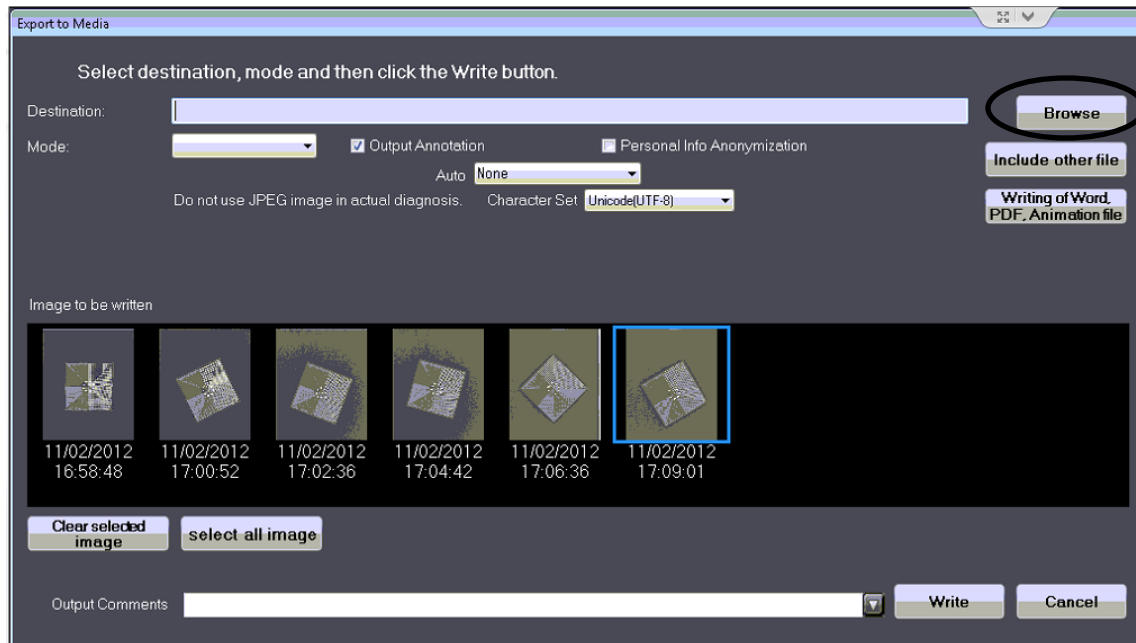
**Note:** Depending on your software version the screens viewed may be different than shown:

1. From the viewing screen, locate the “Write” button located in the top center of the screen (you may have to click on the drop down menu to see it) and then press the “Write” button.

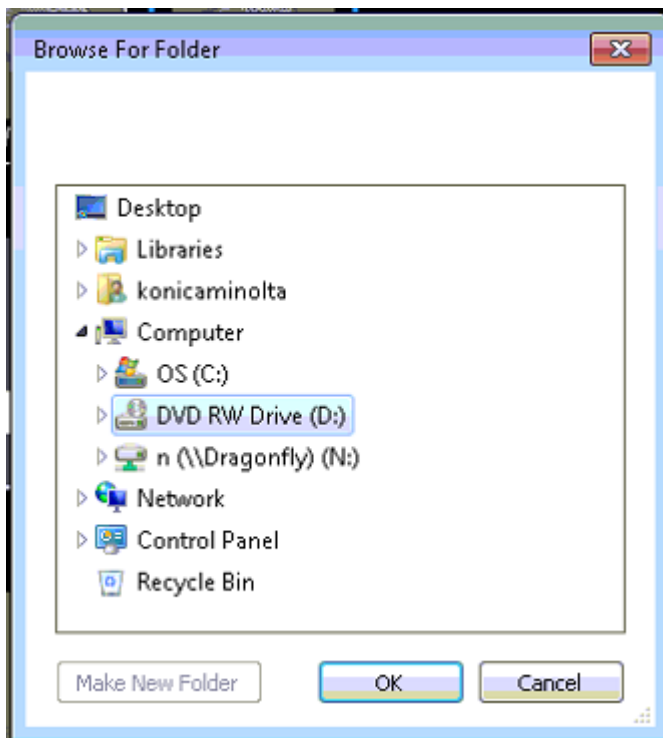


# Exporting Images

2. The following screen will appear:

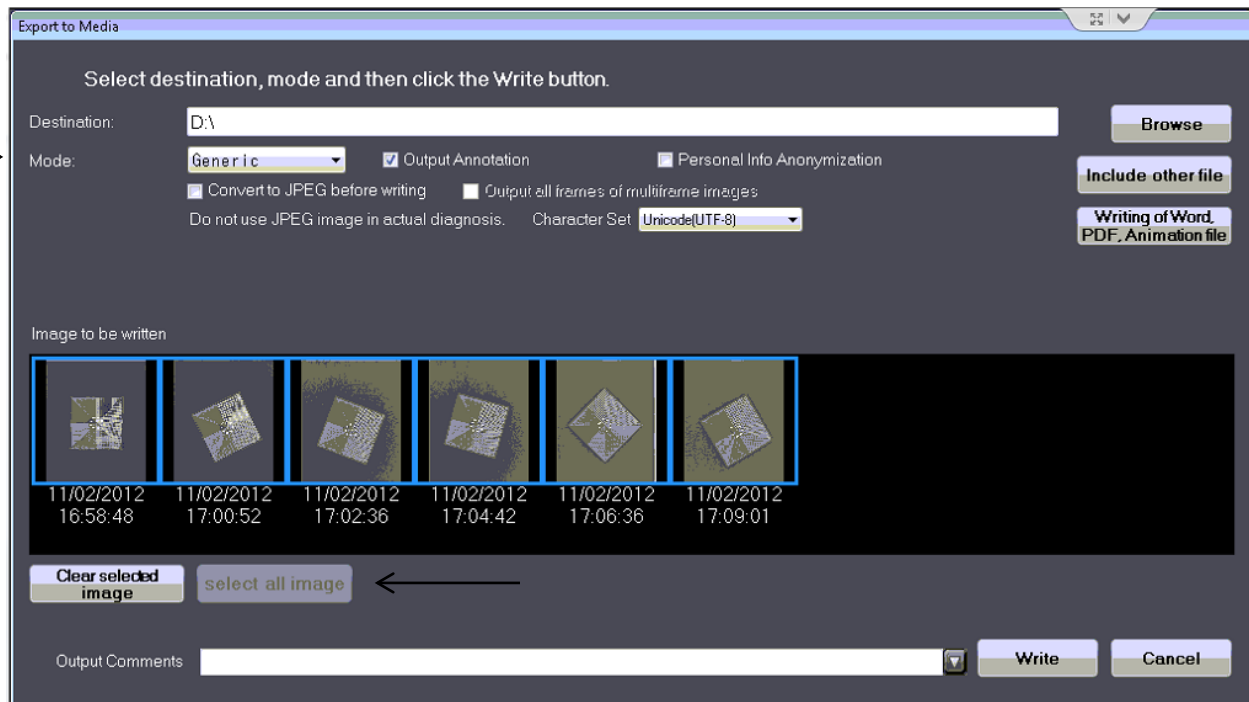


3. Press the "Browse" button locate at the top right corner and the following will appear:



## Exporting Images

4. Choose where you would like to save your images. From here you can choose a folder on your local computer, the desktop, a CD/DVD, usb drive, or network share.
5. You now need to choose the “Mode” (either generic or PDI) and highlight all or any images you wish to copy. The generic mode only exports the images, but you can save them anywhere you would like. The PDI creates a mini viewer, however PDI will only allow you to burn a disc.

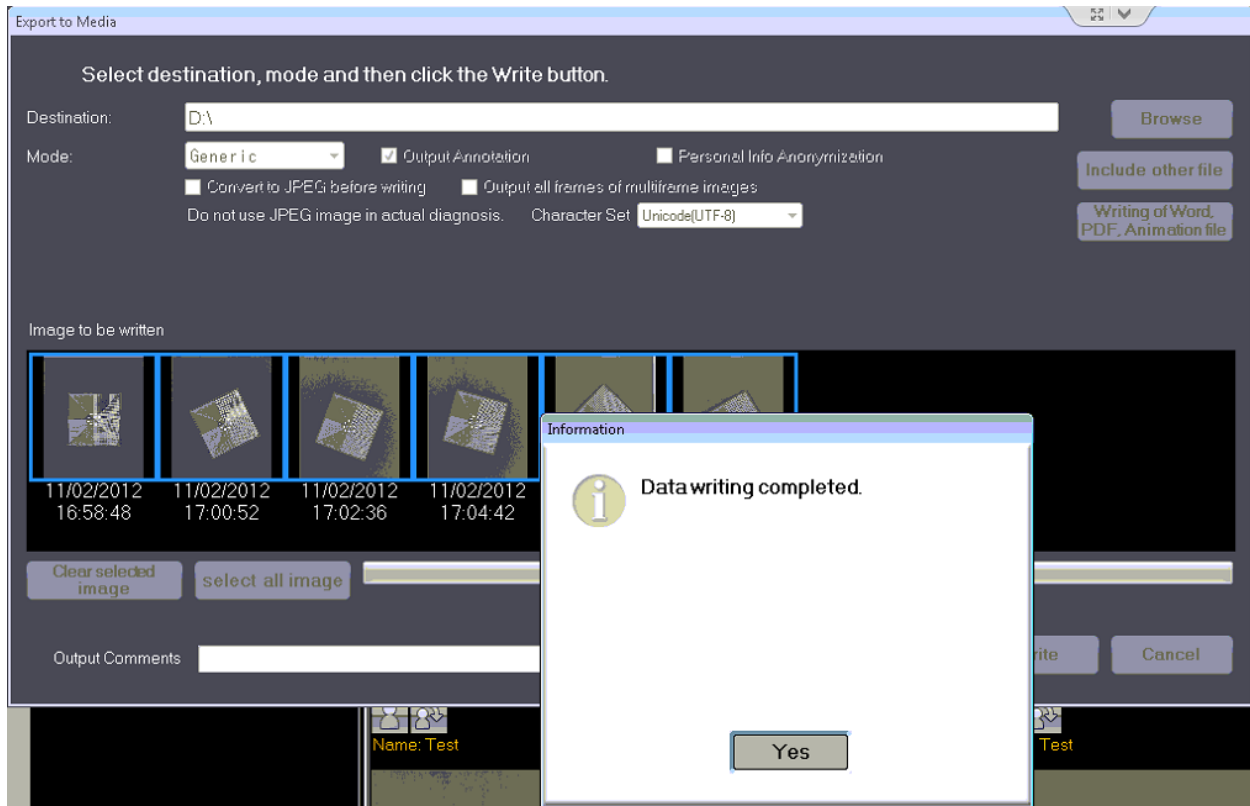


6. You can also select other options located next to “Mode” such as “Output Annotations”, “Convert to Jpeg”, etc. If you are using the generic mode, you can export as both dicom and jpeg. Jpeg images are compressed, but are smaller and can be opened anywhere. You need a special dicom viewer to open dicom images and they are a much larger file size.
7. After making sure all selections are correct, press the “Write” button located on the bottom right corner

**\*\*If you are sending the images via e-mail, it is recommended to place a check in the box which says “Convert to JPEG before writing”. This decreases the file size to be able to send more than one at a time and allows the recipient to open the images without a specialized viewer.\*\***

## Exporting Images

- A box will appear and tell you that the program is writing data. Once finished, the following will appear:



- If you burned a DVD, it will eject. Press "Yes" and remove the disc if you used one. This process is now complete.